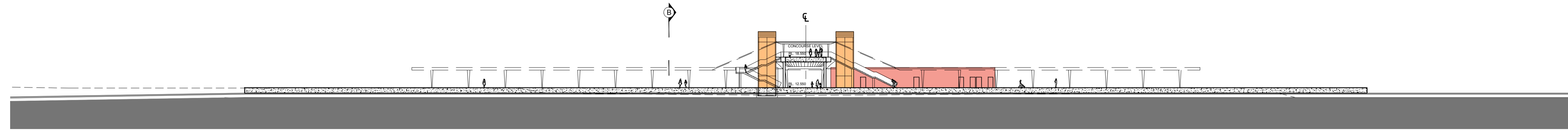
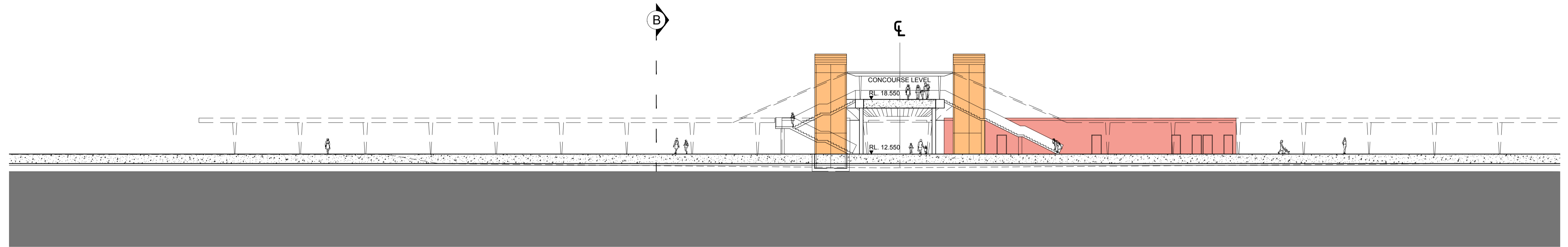


CONCOURSE RL 18.550
 PLATFORM RL 12.550
 TRACK RL 11.500



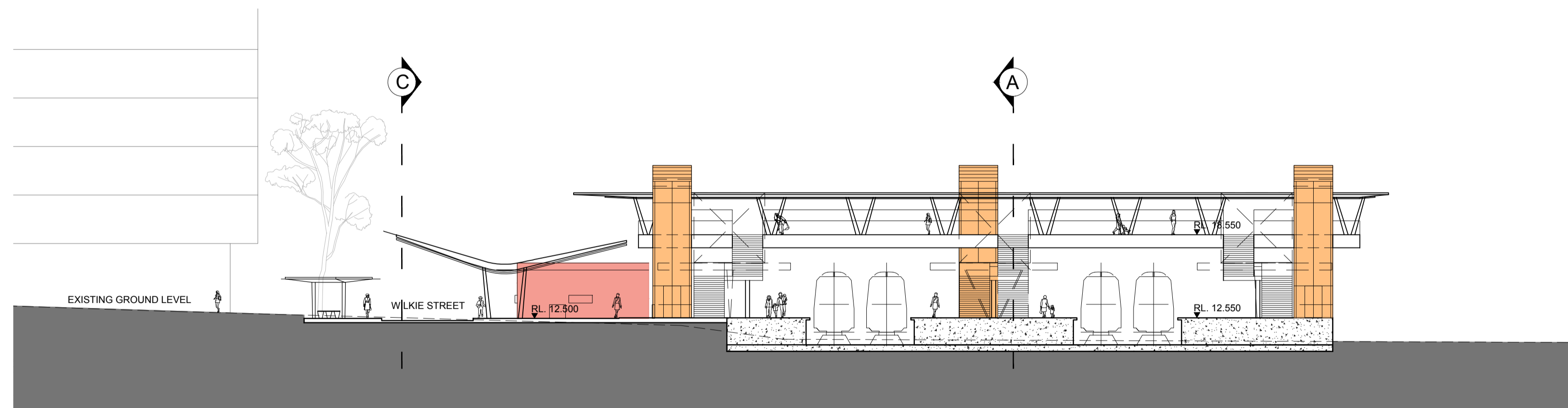
LONG CROSS SECTION A_A

CONCOURSE RL 18.550
 PLATFORM RL 12.550
 TRACK RL 11.500



PART LONG CROSS SECTION A_A
 1:200 @ A1 1:400 @ A3

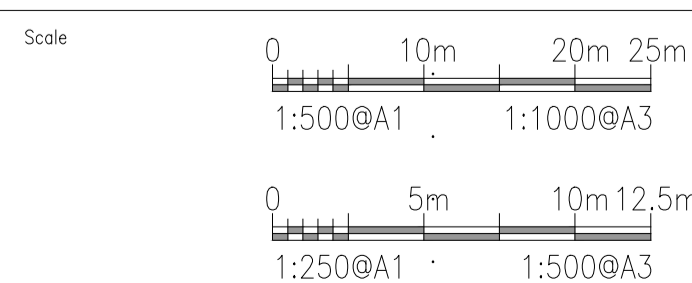
CONCOURSE RL 18.550
 PLATFORM RL 12.550
 TRACK RL 11.500



SECTION B_B

- MAIN ENTRY
- PAID AREA
- UNPAID AREA
- STATION ACCOMMODATION
- SERVICES
- RETAIL
- FUTURE DEVELOPMENT
- FIRE EGRESS
- OUTDOOR PUBLIC SPACE

This drawing is confidential and shall only be used for the purposes of this project.



DISCLAIMER:
 THIS DOCUMENT IS FOR THE PURPOSE OF BUSINESS CASE AND EIS DEVELOPMENT ONLY. THE DESIGN SHOWN ON THIS DRAWING IS CONSIDERED TO HAVE AN ACCURACY LEVEL APPROPRIATE FOR THE INTENDED PURPOSE OF THE REFERENCE DESIGN. THIS DOCUMENT USES DATA PROVIDED BY THIRD PARTIES WHICH HAS NOT BEEN INDEPENDENTLY VERIFIED. INFORMATION SHOULD BE REVIEWED DURING SUBSEQUENT PHASES OF THE PROJECT. ALL USE OF, OR RELIANCE UPON THIS DOCUMENT BY ANY THIRD PARTY IS AT THE RISK OF THAT THIRD PARTY.

LEAD DESIGN CONSULTANT
AECOM
 AECOM Australia Pty Ltd A.B.N. 20 093 846 925

CrossRiverRail



CROSS RIVER RAIL
 YEERONGPILLY STATION
 SECTIONS A-A & B-B

NO.	BY	DATE	DESCRIPTION	APPD
C		13.05.11	UPDATED REFERENCE DESIGN	

NOT FOR CONSTRUCTION

DRAWN _____ CHECKED _____

SUB-CONSULTANT
HASSELL
 HASSELL Ltd A.B.N. 24 007 711 435

Status REFERENCE DESIGN

Drwg No. CRR-YEE-A-3001

Rev. C